



REGIONE DEL VENETO

Regione Veneto Comune di Malo



PIANO DELLE ACQUE

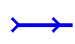
Allegato 1 Estratti di dettaglio dei bacini principali

Legenda

 Limite comunale

RETICOLO IDROGRAFICO

 Corso d'acqua

 Impluvio


 Capofosso


 Fosso

 Scolina

 Tombinamento

RETE METEORICA

 Rete acque bianche

 Rete acque miste

 Collettore

 Afflussi

 Deflussi

BACINO GAZZOLA

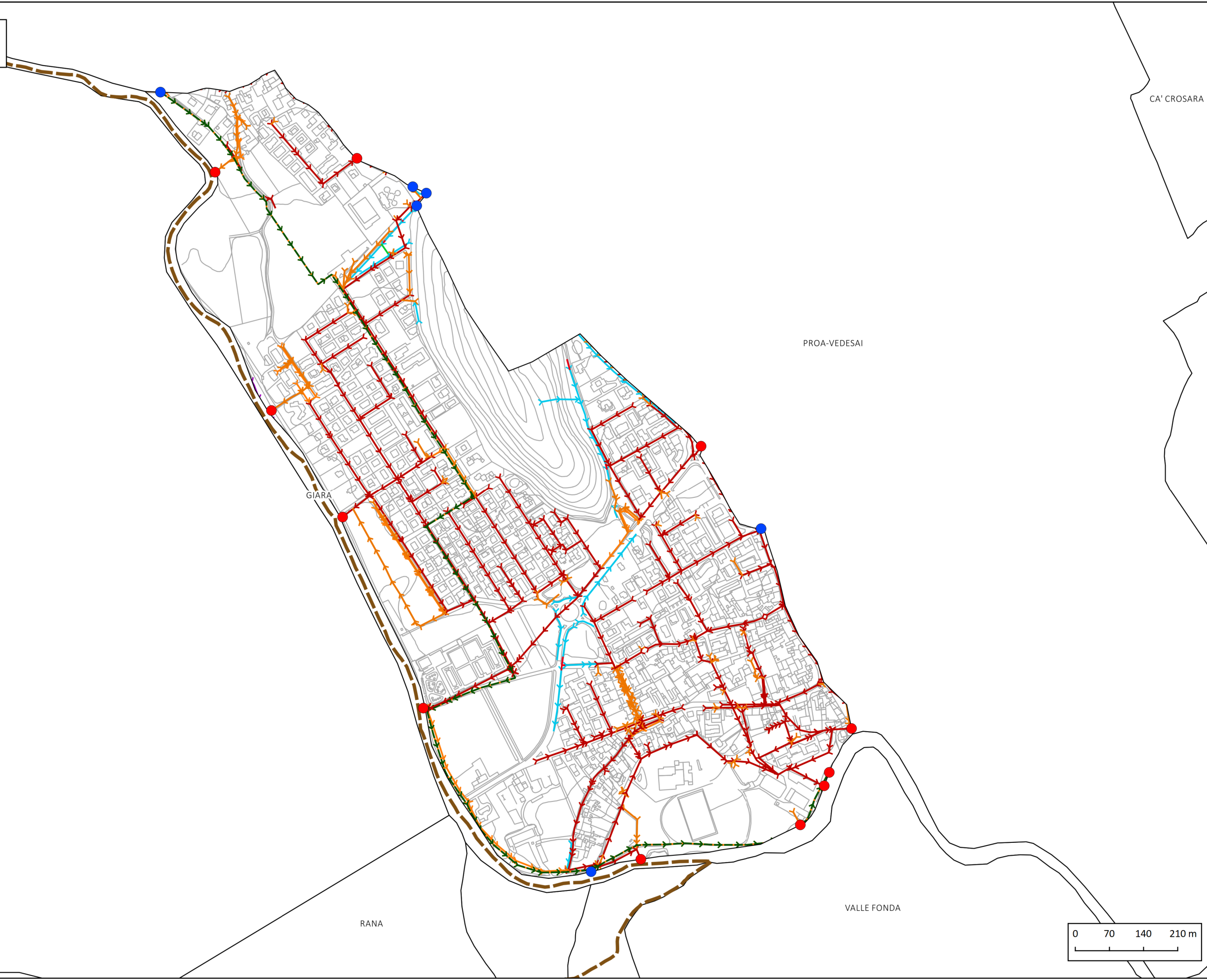
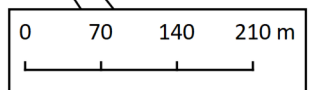
CA' CROSARA

PROA-VEDESAI

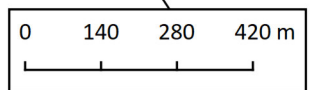
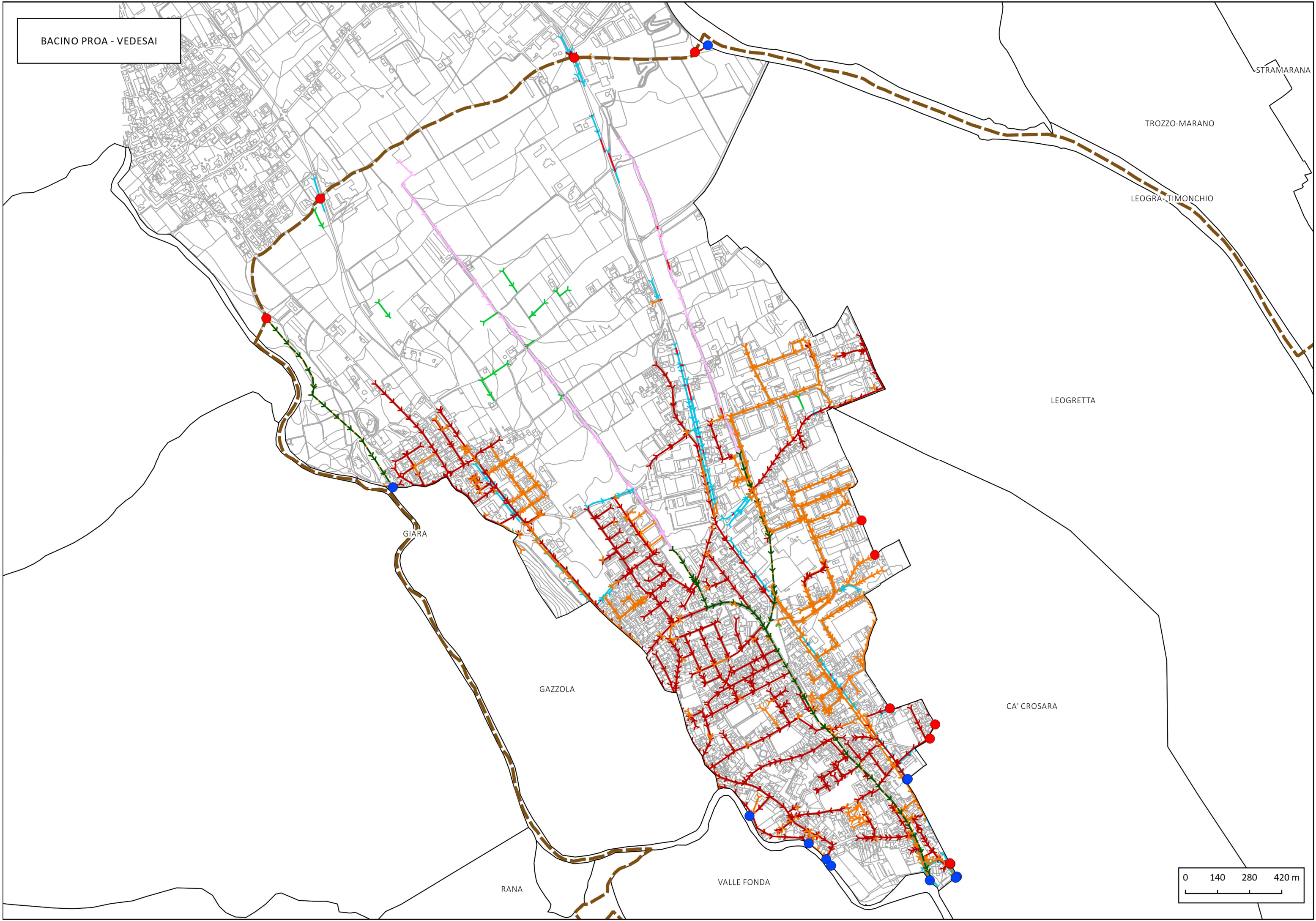
GIARA

RANA

VALLE FONDA



BACINO PROA - VEDESAI



BACINO LEOGRETTA

ROSTONE

BORGO LAMPERTICO

PROA-VEDESAI

STRAMARANA

TROZZO-MARANO

LEOGRA-TIMONCHIO

GAZZOLA

CA' CROSARA

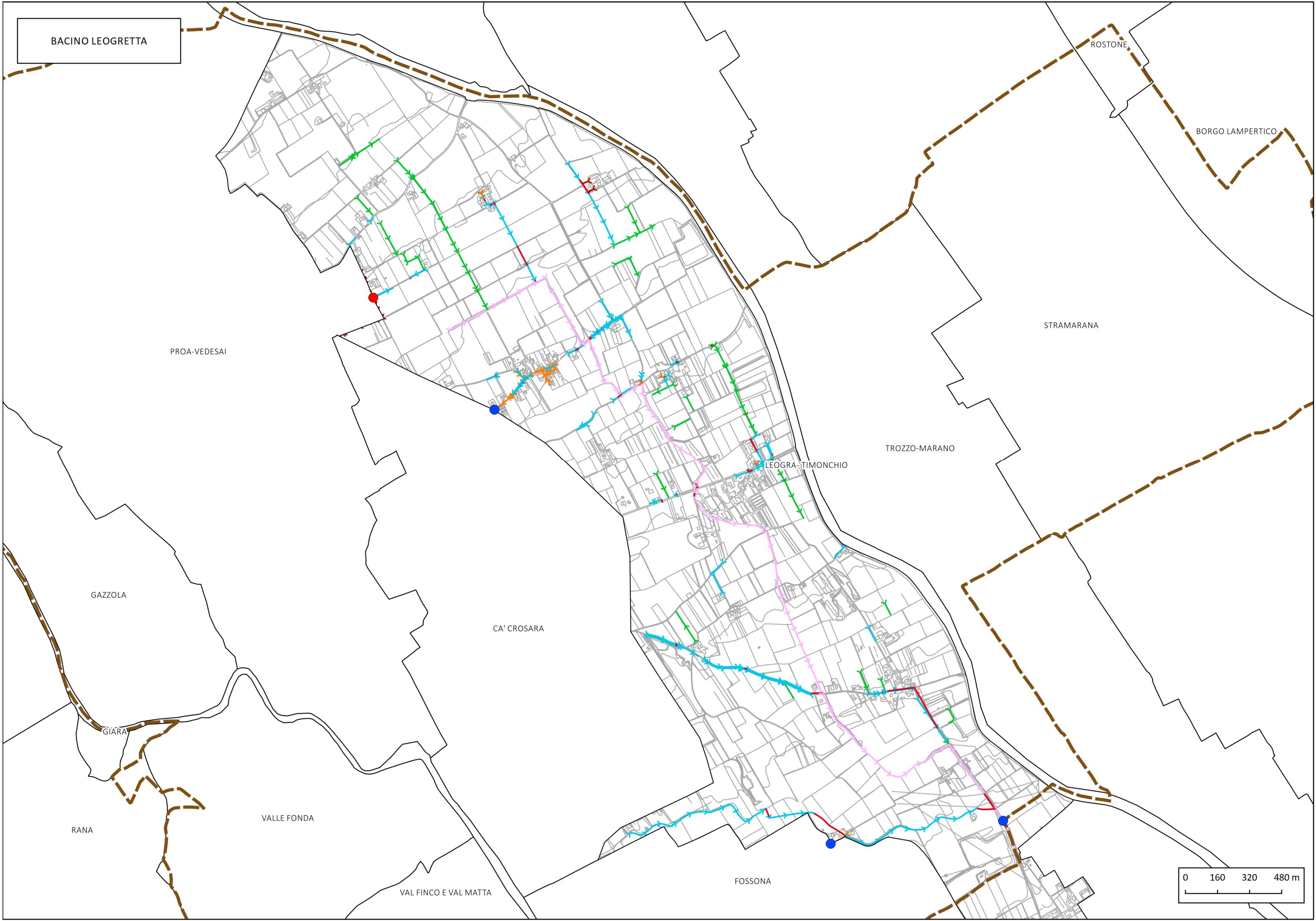
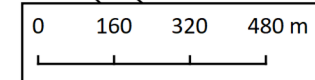
GIARA

RANA

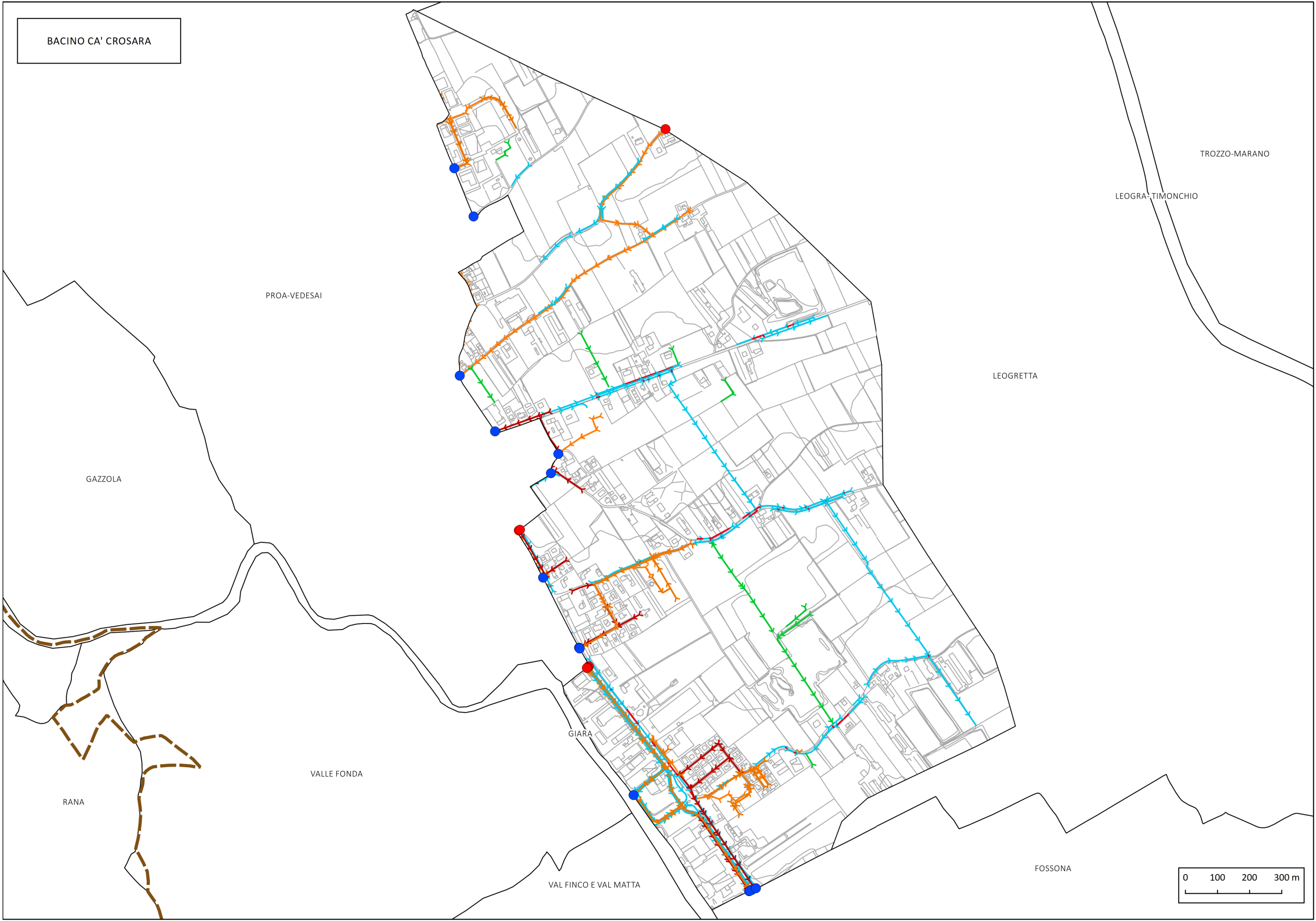
VALLE FONDA

VAL FINCO E VAL MATTA

FOSSONA



BACINO CA' CROSARA



PROA-VEDESAI

GAZZOLA

RANA

VALLE FONDA

VAL FINCO E VAL MATTA

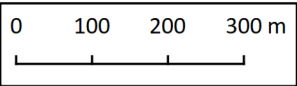
GIARA

LEOPRETTO

LEOPRA-TIMONCHIO

TROZZO-MARANO

FOSSONA



BACINO FOSSONA

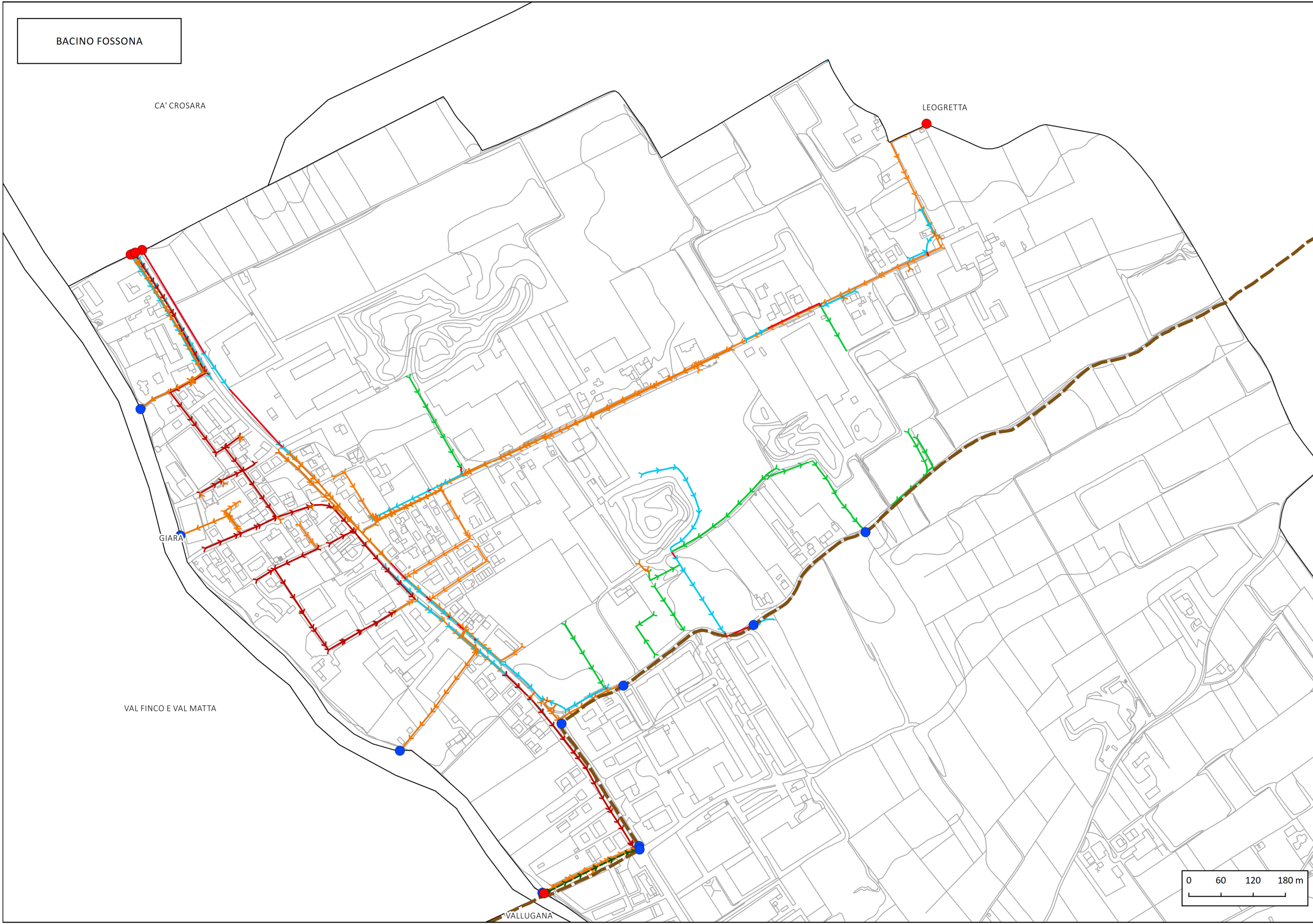
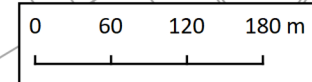
CA' CROSARA

LEOGRETTA

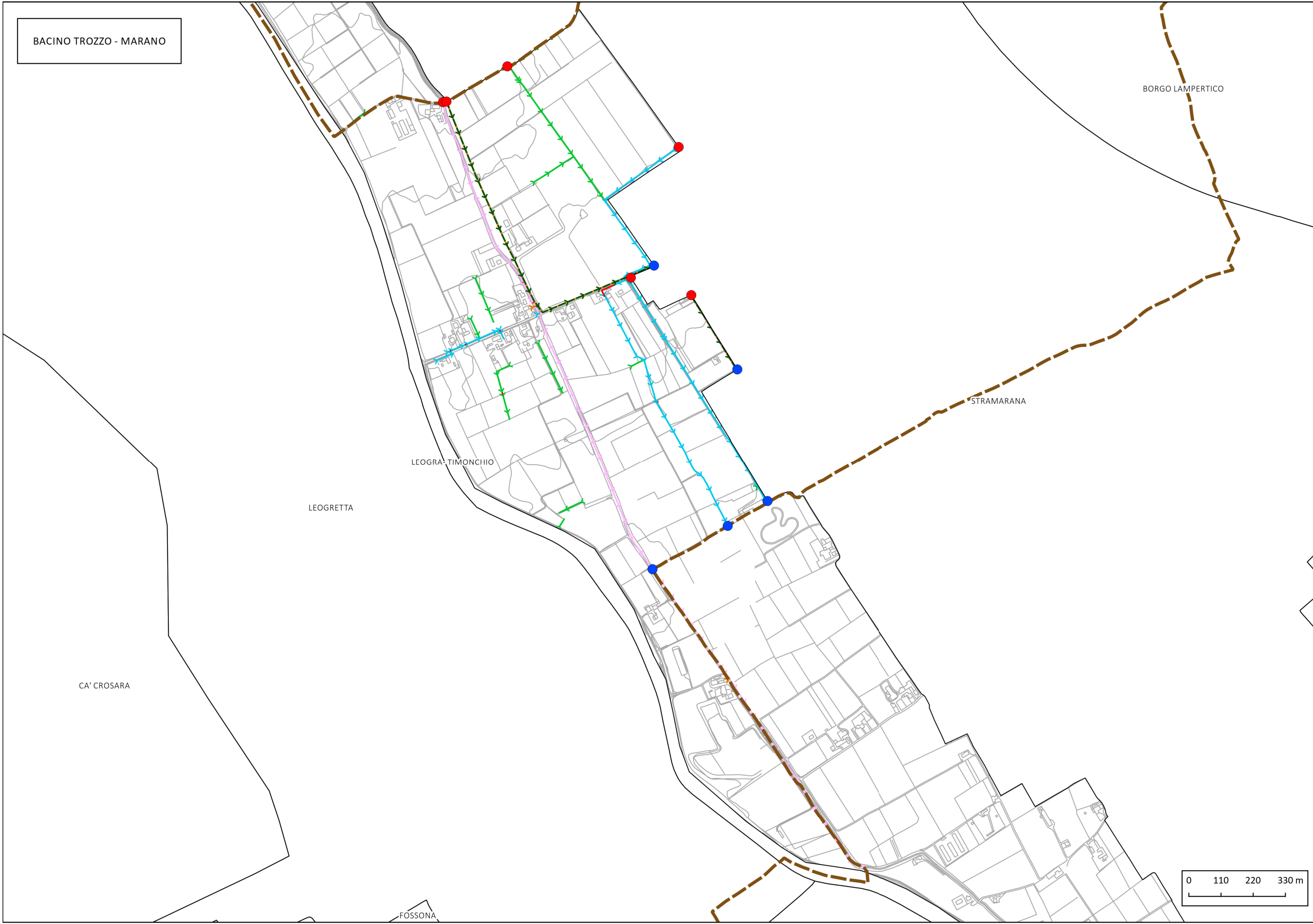
GIARA

VAL FINCO E VAL MATTA

VALLUGANA



BACINO TROZZO - MARANO



BORGIO LAMPERTICO

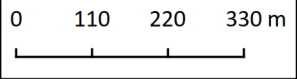
LEOGRA-TIMONCHIO

LEOGRETTA

STRAMARANA

CA' CROSARA

FOSSONA



BACINO STRAMARANA

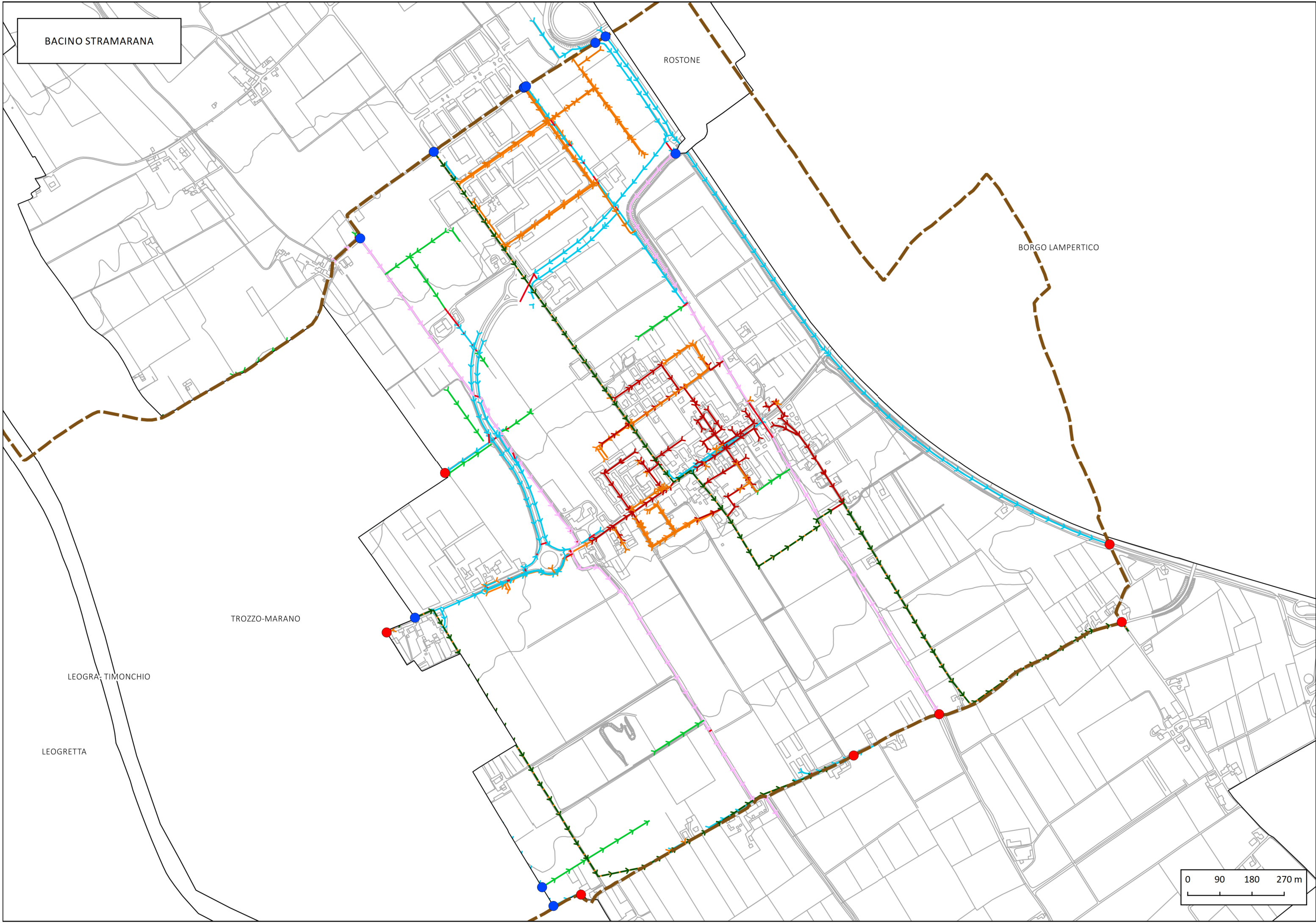
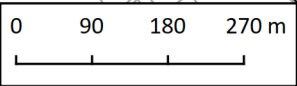
ROSTONE

BORGO LAMPERTICO

TROZZO-MARANO

LEOGRA-TIMONCHIO

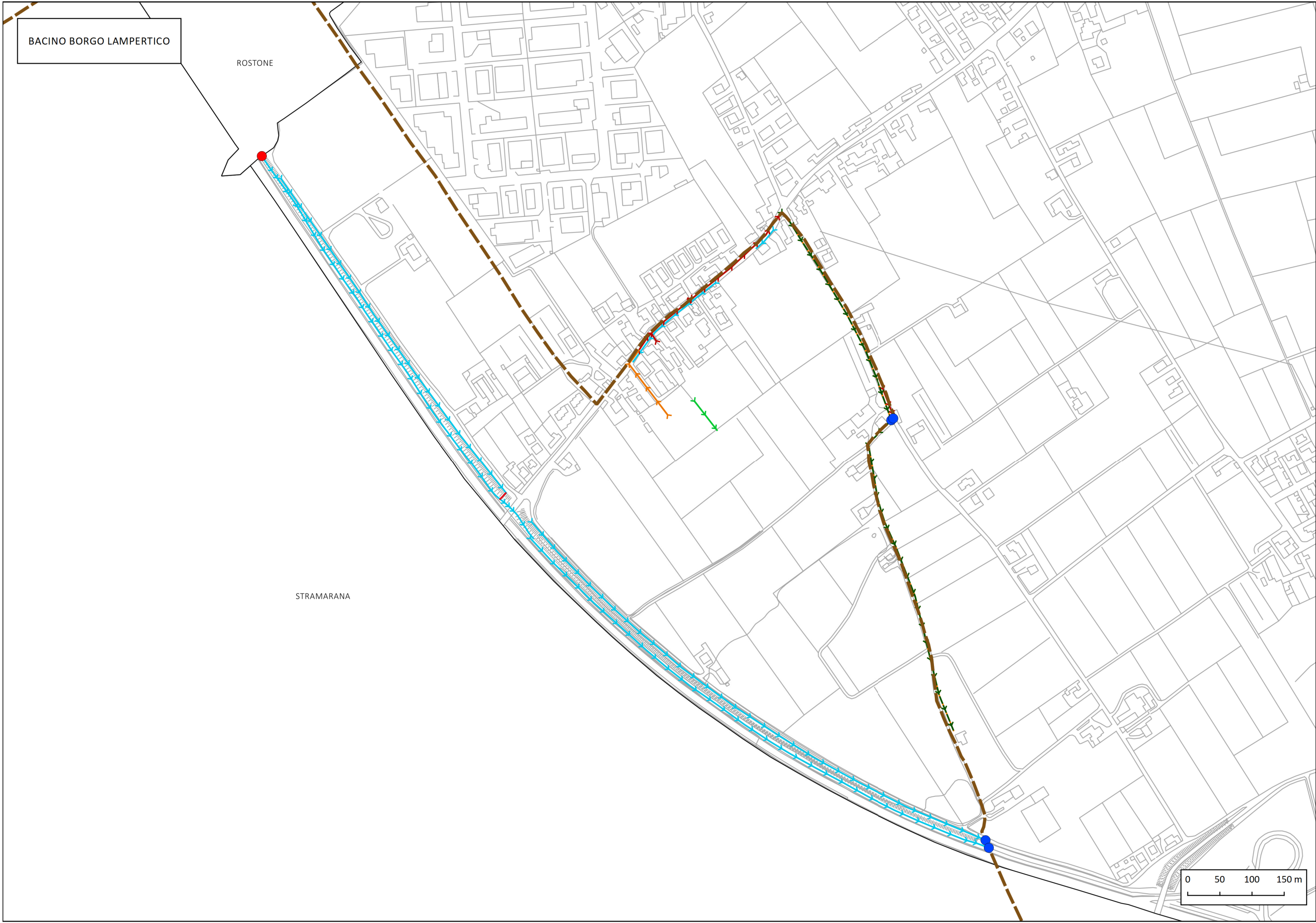
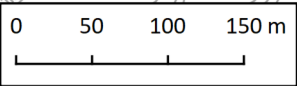
LEOGRETTA



BACINO BORGO LAMPERTICO

ROSTONE

STRAMARANA



BACINO VALLE FONDA

GAZZOLA

PROA-VEDESAI

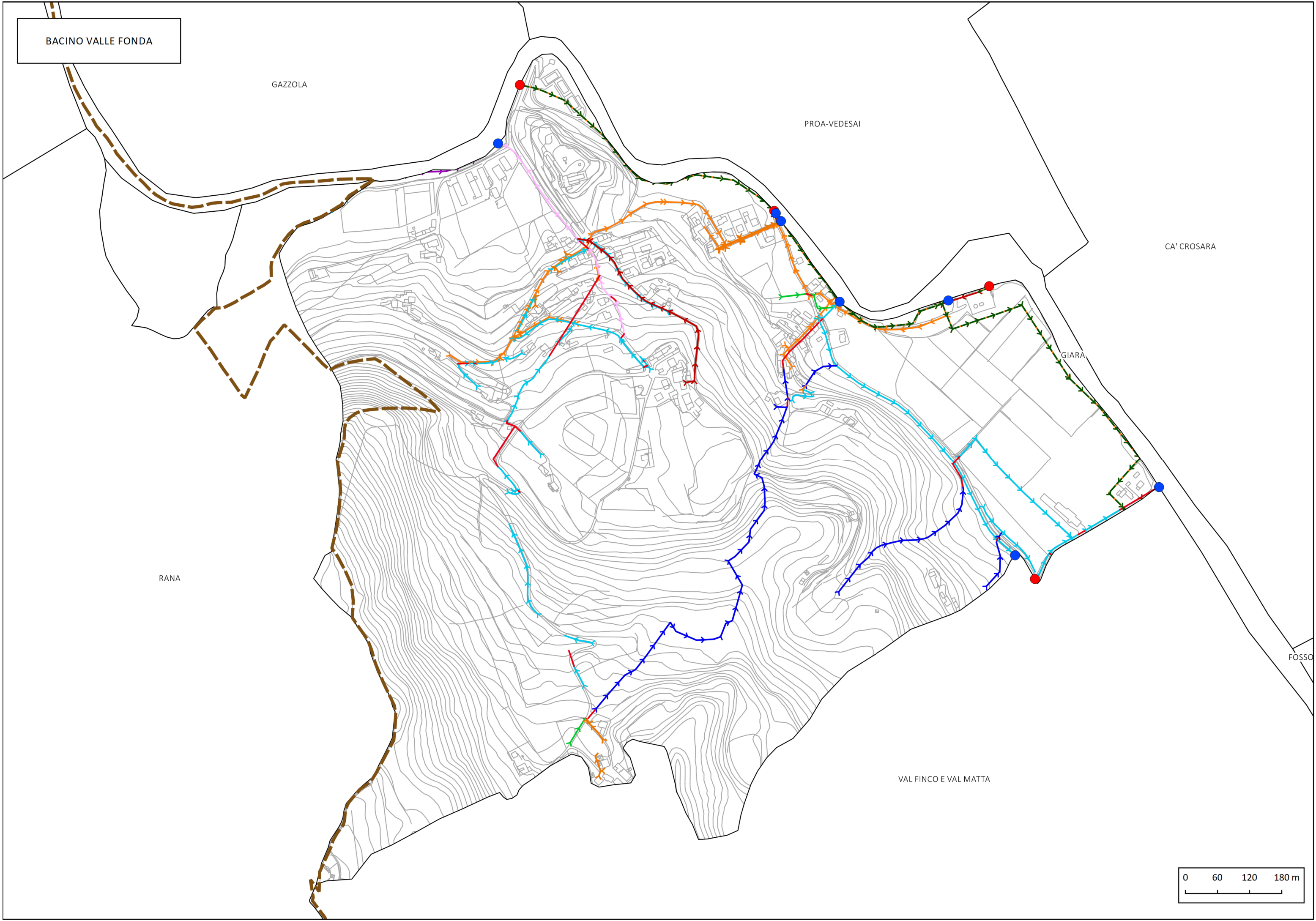
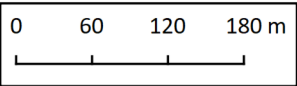
CA' CROSARA

GIARA

RANA

FOSSO

VAL FINCO E VAL MATTA



BACINO VALLUGANA

RANA

VAL FINCO E VAL MATTA

