



REGIONE DEL VENETO

# Regione Veneto Comune di Malo



## PIANO DELLE ACQUE

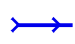
### Allegato 1 Estratti di dettaglio dei bacini principali

#### Legenda

 Limite comunale

#### RETICOLO IDROGRAFICO

 Corso d'acqua

 Impluvio


 Capofosso


 Fosso

 Scolina

 Tombinamento

#### RETE METEORICA

 Rete acque bianche

 Rete acque miste

 Collettore

 Afflussi

 Deflussi

BACINO GAZZOLA

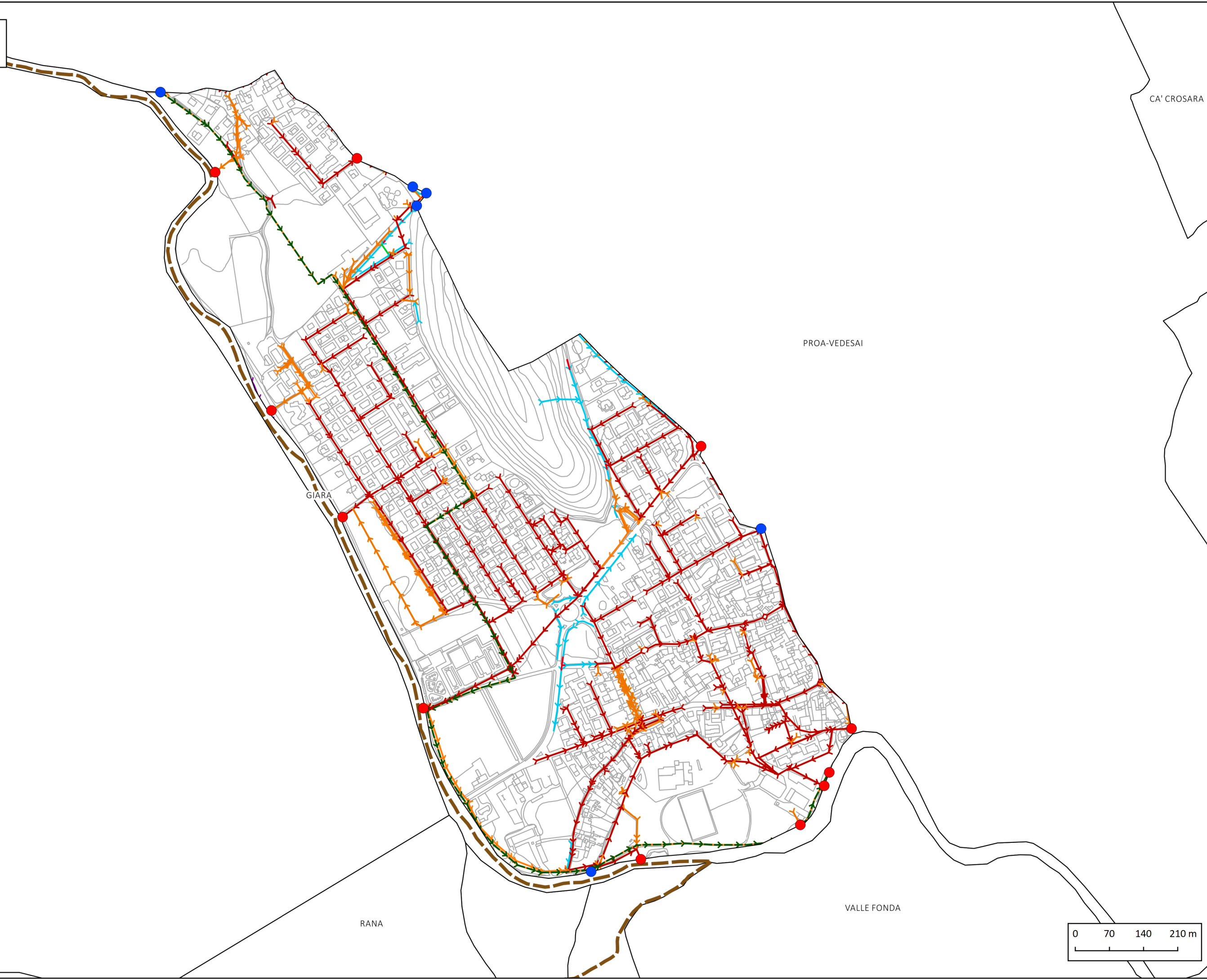
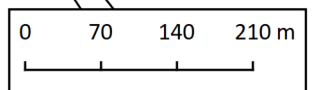
CA' CROSARA

PROA-VEDESAI

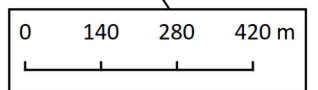
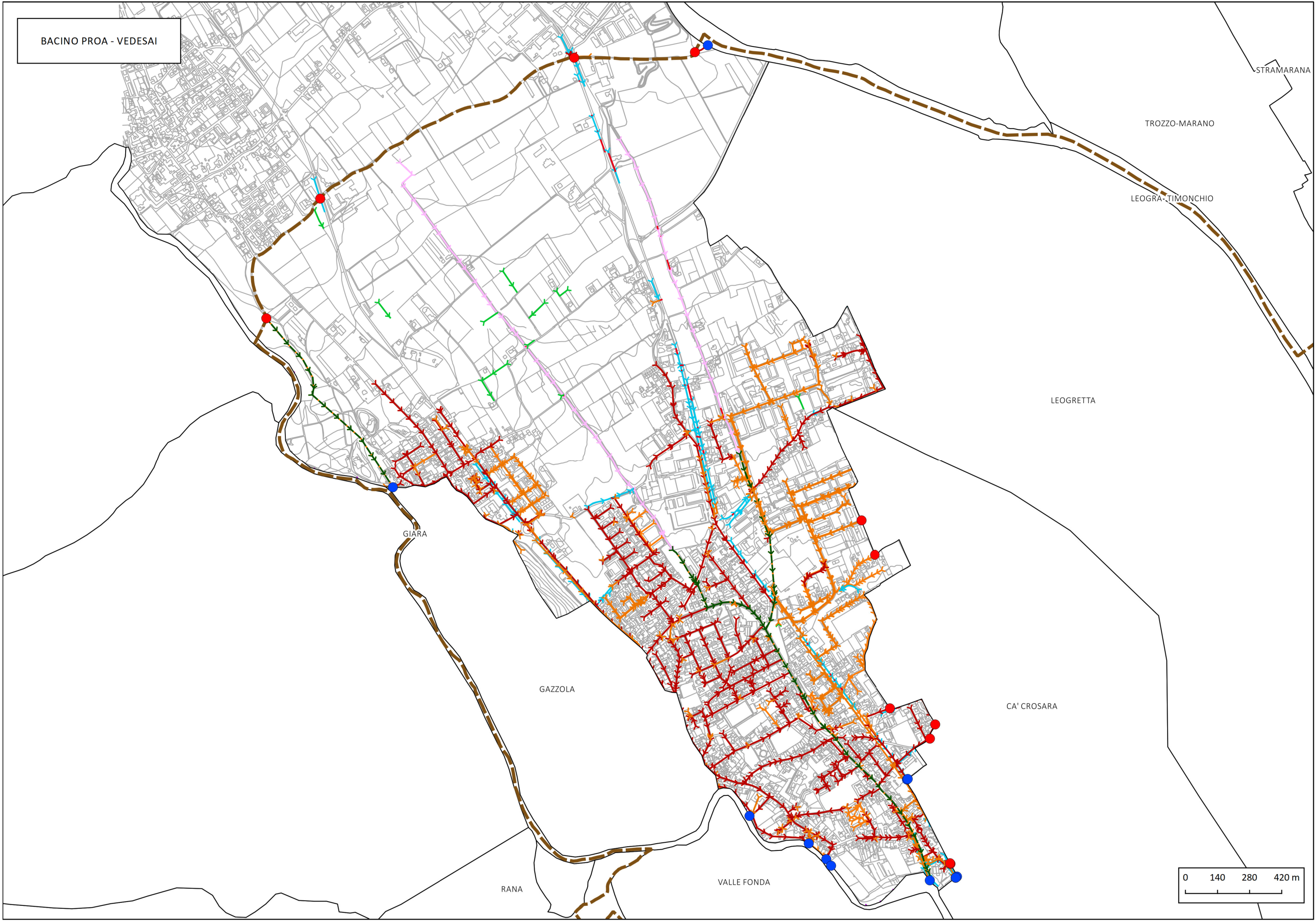
GIARA

RANA

VALLE FONDA



BACINO PROA - VEDESAI



BACINO LEOGRETTA

ROSTONE

BORGIO LAMPERTICO

PROA-VEDESAI

STRAMARANA

TROZZO-MARANO

LEOGRA-TIMONCHIO

GAZZOLA

CA' CROSARA

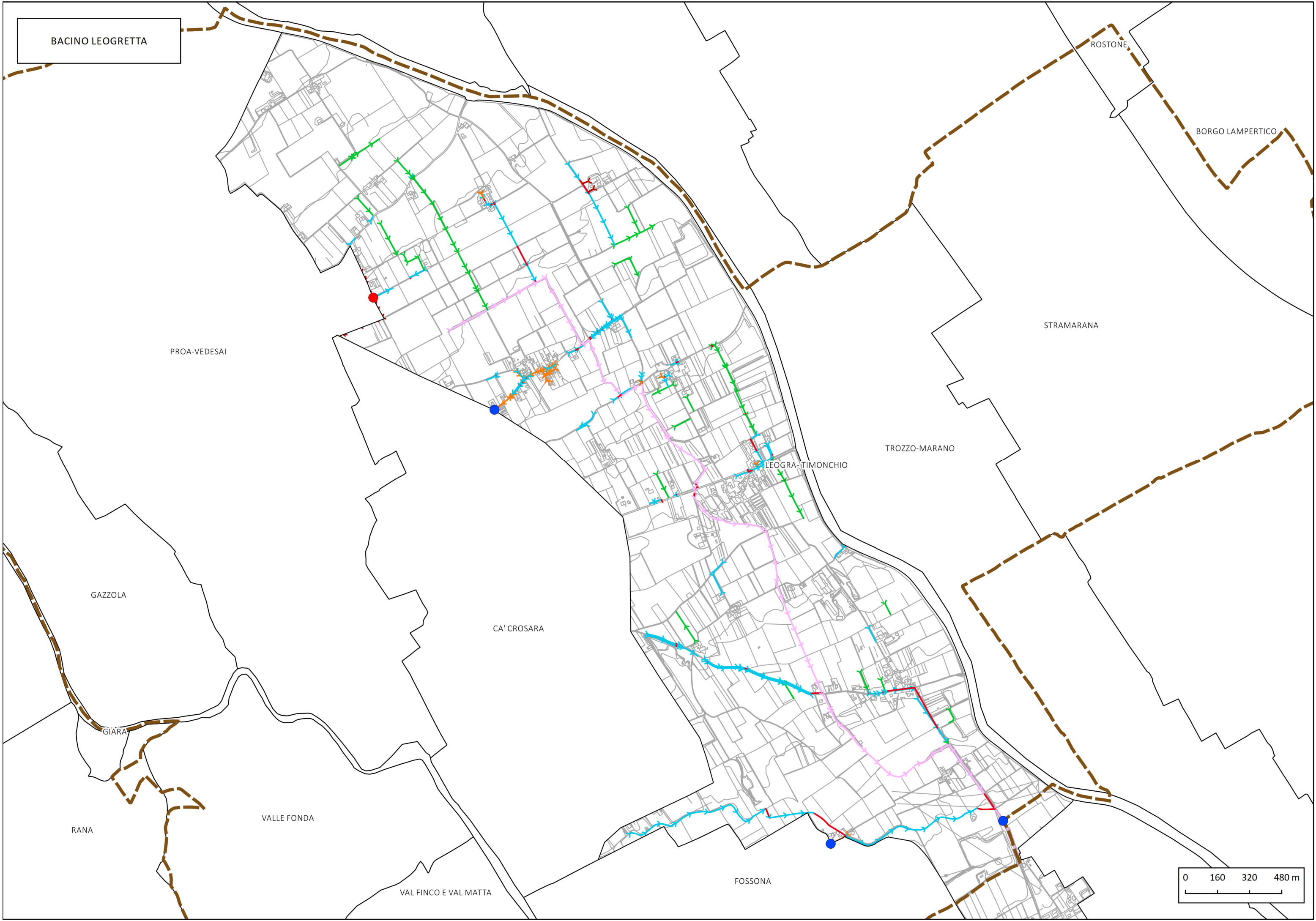
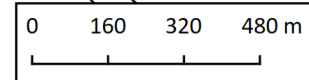
GIARA

RANA

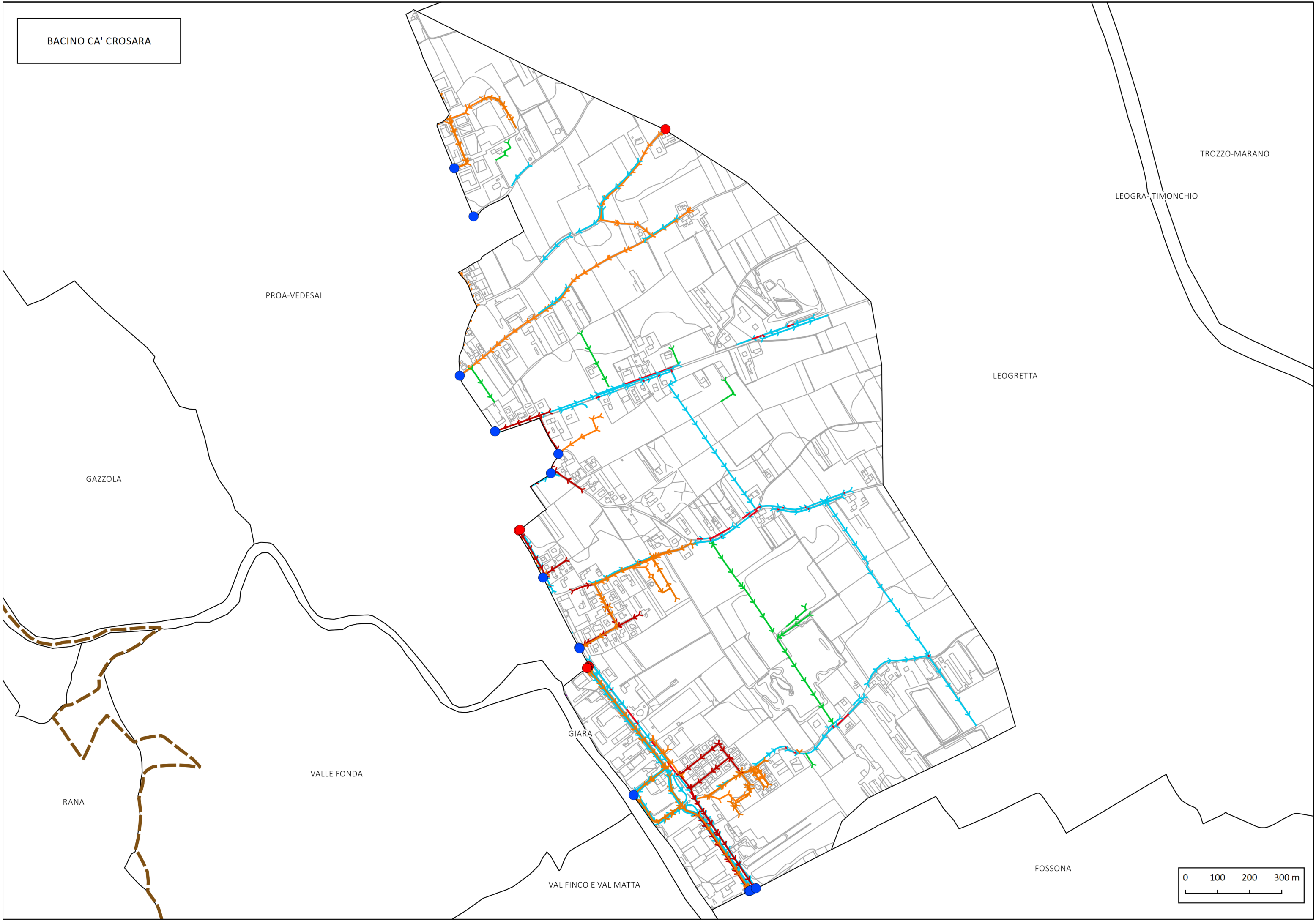
VALLE FONDA

VAL FINCO E VAL MATTA

FOSSONA



BACINO CA' CROSARA



GAZZOLA

PROA-VEDESAI

VALLE FONDA

RANA

GIARA

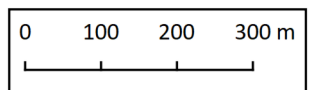
VAL FINCO E VAL MATTA

LEOGRETTO

LEOGRA-TIMONCHIO

TROZZO-MARANO

FOSSONA



BACINO FOSSONA

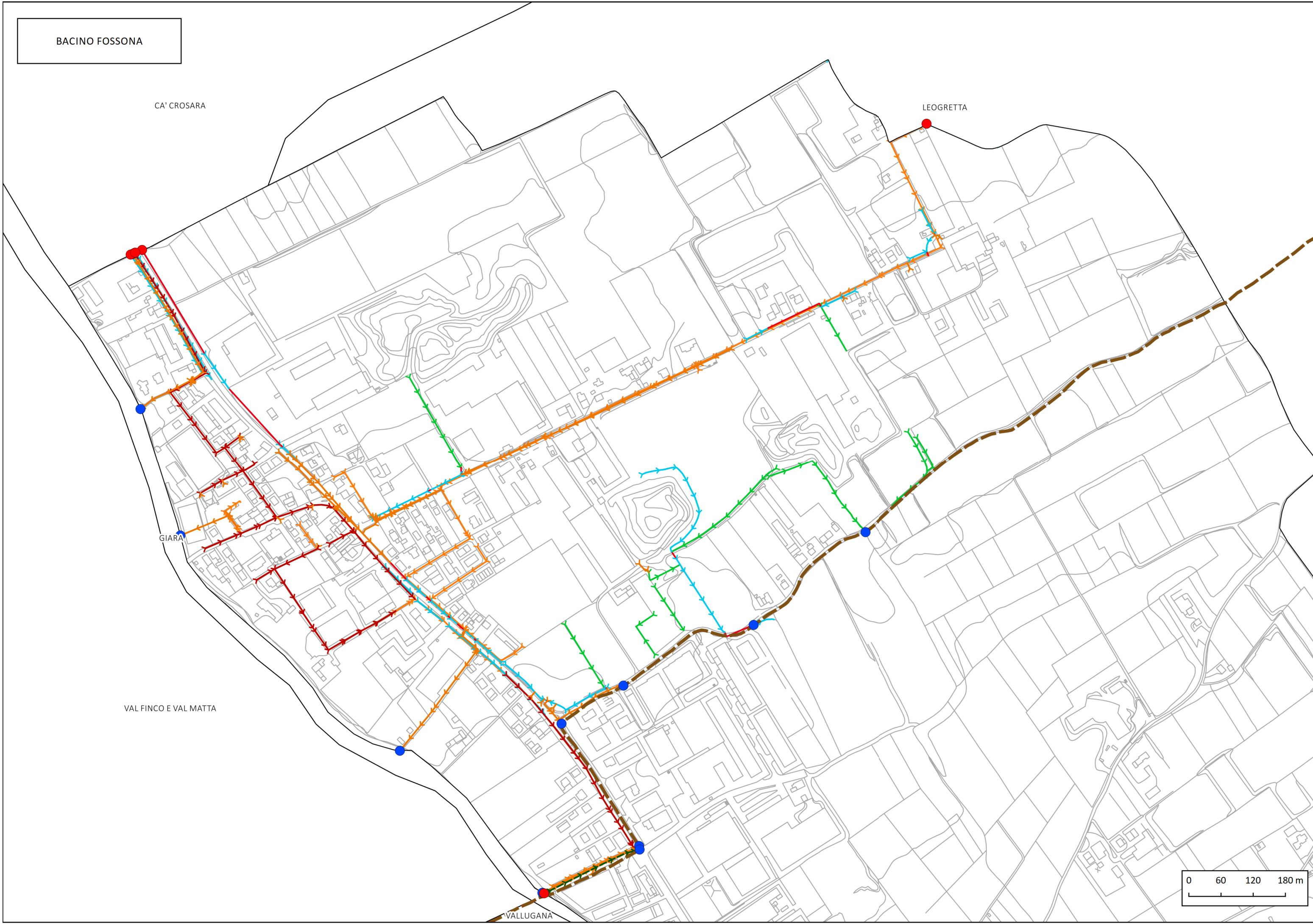
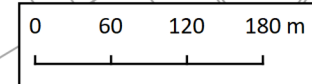
CA' CROSARA

LEOGRETTA

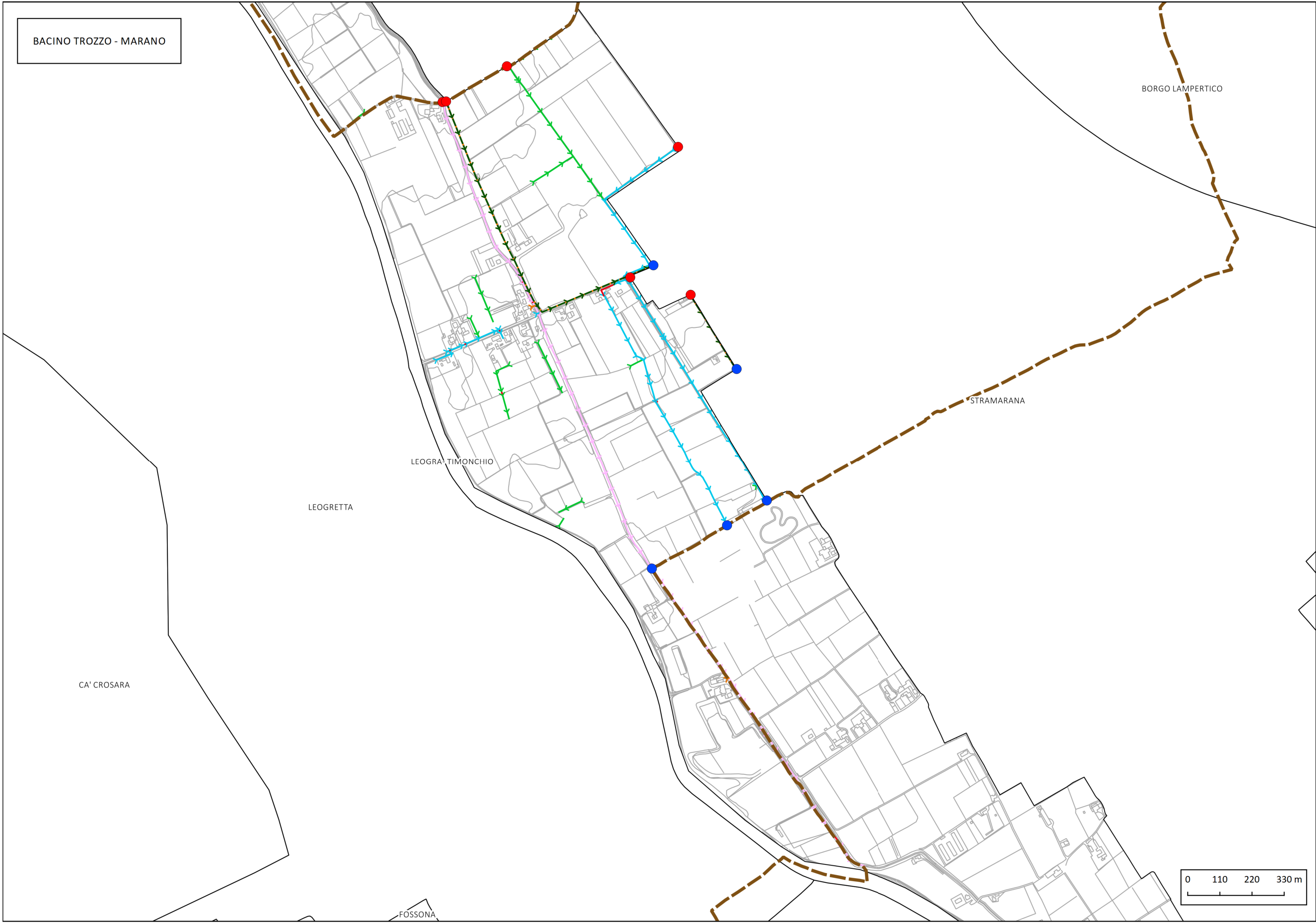
GIARA

VAL FINCO E VAL MATTA

VALLUGANA



BACINO TROZZO - MARANO



BORGO LAMPERTICO

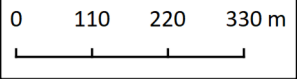
STRAMARANA

LEOGRA-TIMONCHIO

LEOGRETTA

CA' CROSARA

FOSSONA



BACINO STRAMARANA

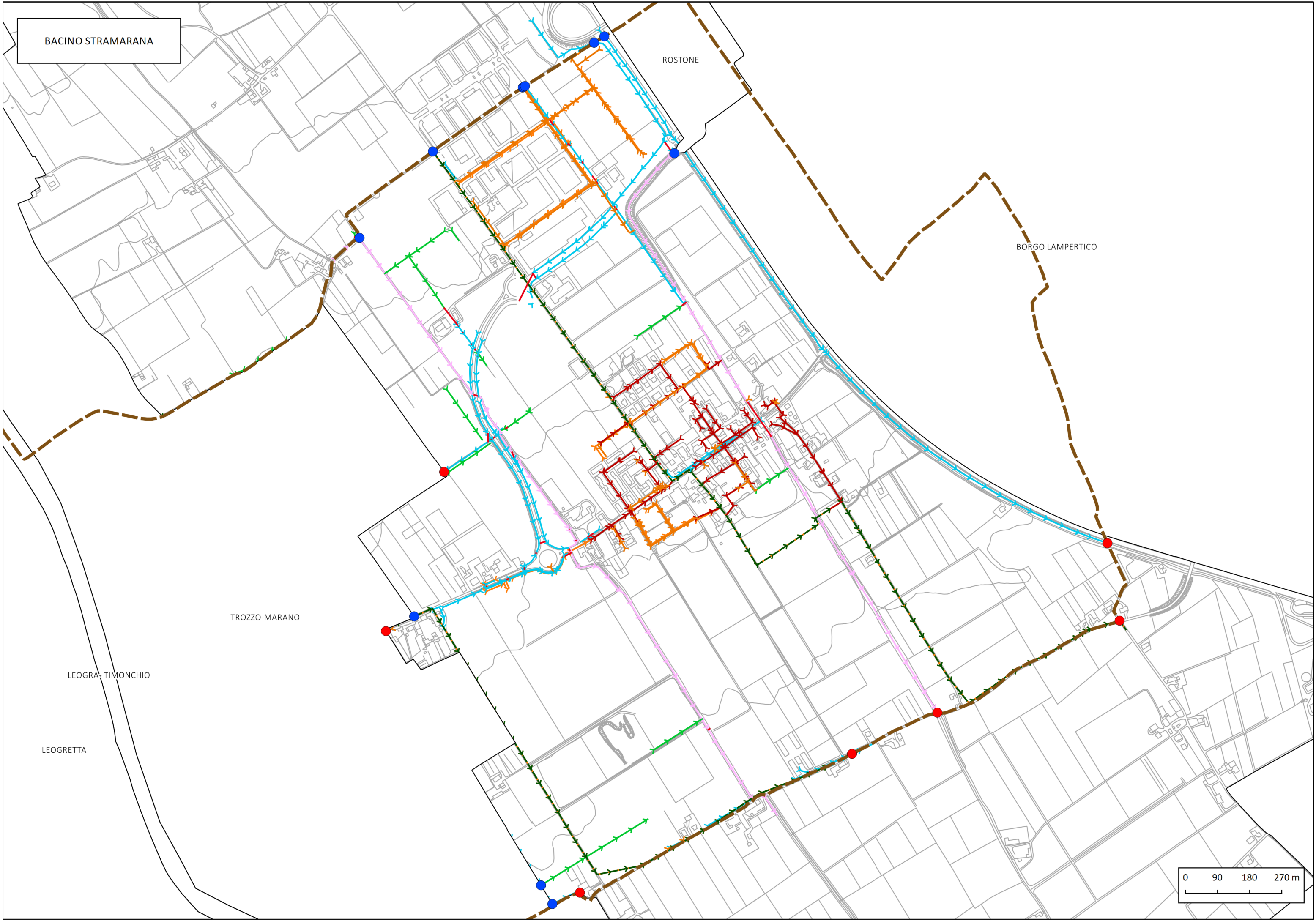
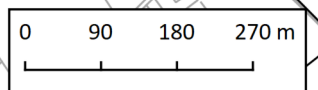
ROSTONE

BORGO LAMPERTICO

TROZZO-MARANO

LEOGRA-TIMONCHIO

LEOGRETTA

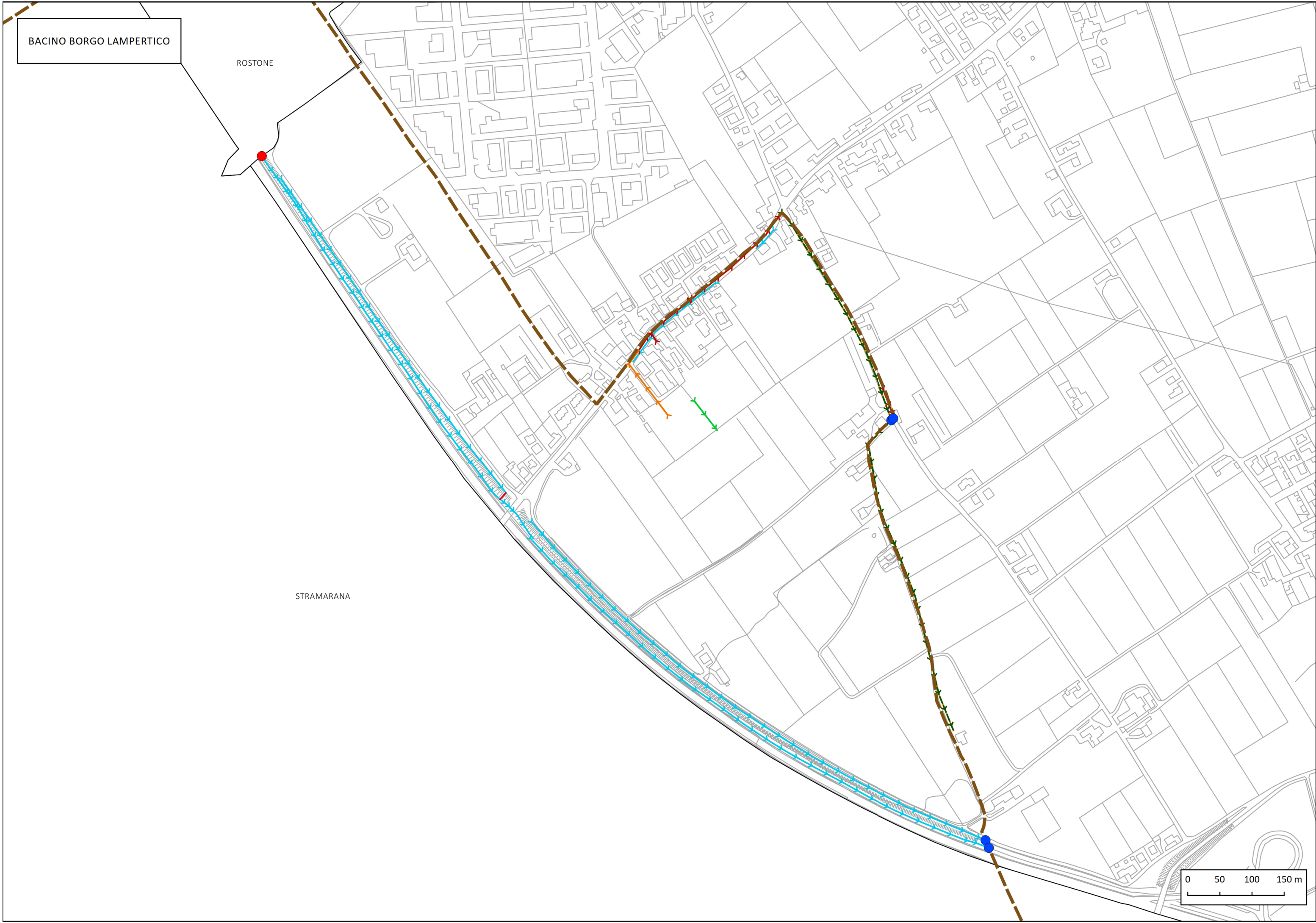
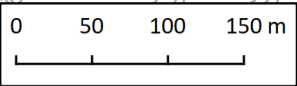




BACINO BORGO LAMPERTICO

ROSTONE

STRAMARANA



BACINO VALLE FONDA

GAZZOLA

PROA-VEDESAI

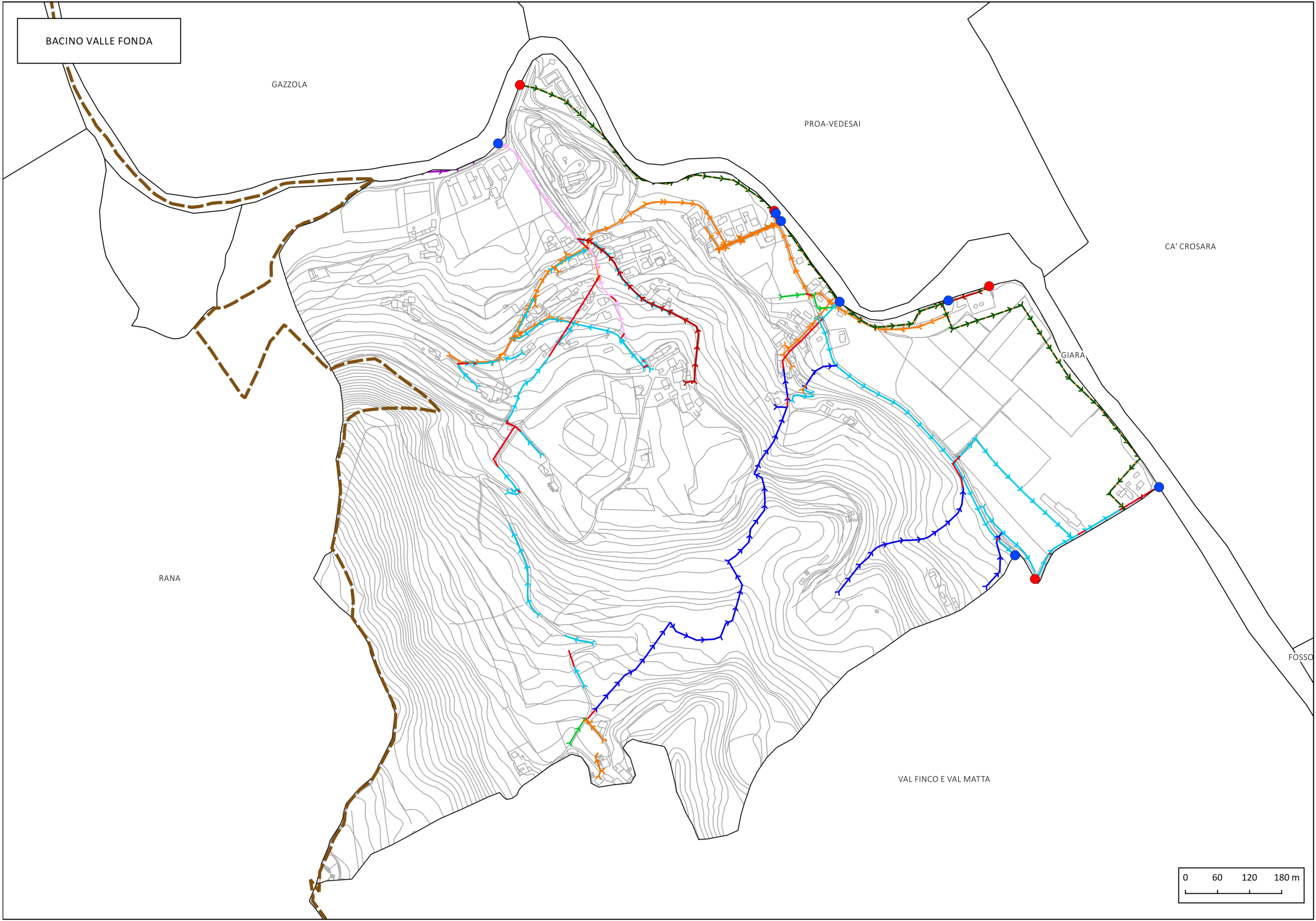
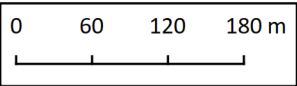
CA' CROSARA

GIARA

RANA

FOSSO

VAL FINCO E VAL MATTA



BACINO VAL FINCO  
E VAL MATTA

VALLE FONDA

CA' CROSARA

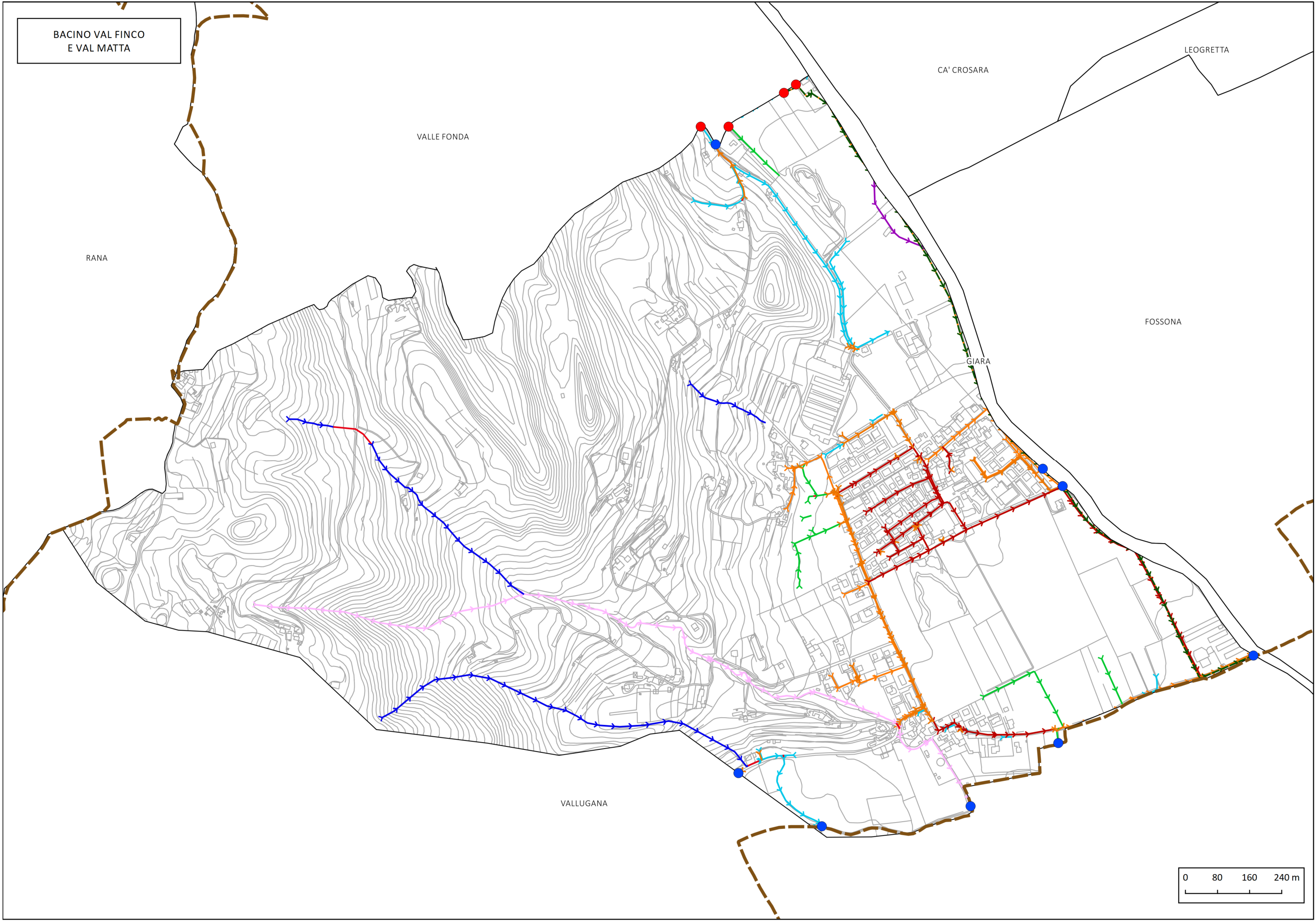
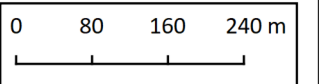
LEOGRETTA

RANA

FOSSONA

GIARA

VALLUGANA



BACINO VALLUGANA

RANA

VAL FINCO E VAL MATTA

